

CMRS

COASTAL METAL ROOFING SUPPLY



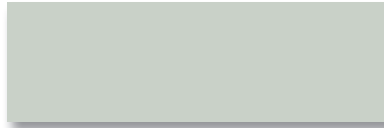
CMRS provides a variety of metal roof and wall panels in 26 gauge and/or 29 gauge material. Please see the back of this chart to view the profiles that are available.

The 40-year Silicon Polyester paint system, with Cool Roof Technology, provides solar reflectance ratings to meet today's Energy Star requirements. The 40-year paint system and galvalume steel guarantees a winning combination of weather-tested paint performance and superior corrosion resistance.

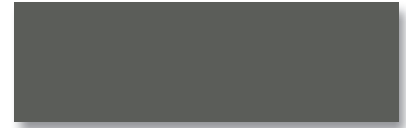


29/26 Gauge Color Chart

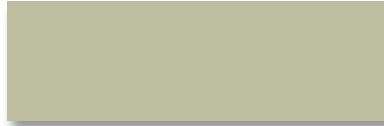
Phone: 843-974-8535 Website: www.coastalmetalroofingsupply.com



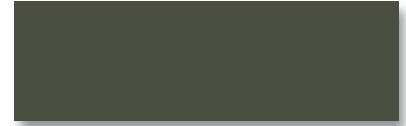
Polar White (Blanco Polar)



Charcoal Grey (Griz Oscuro)



Light Stone (Piedra Clara)



Burnished Slate (Griz Carbón)



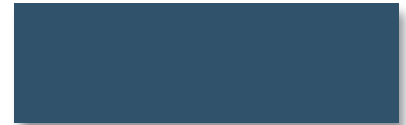
Sahara Tan (Arena)



Forest Green (Verde Selva)



Ash Grey (Griz Ceniza)



Gallery Blue (Azul Royal)



Hawaiian Blue (Azul Cielo)



Cocoa Brown (Coco)



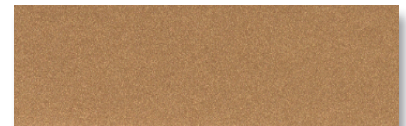
Burgundy (Vino)*



Country Red (Terracota)



Brite Red (Rojo Sangre)



Copper Penny (Cobre Metálico)



Coal Black (Onyx Negro)



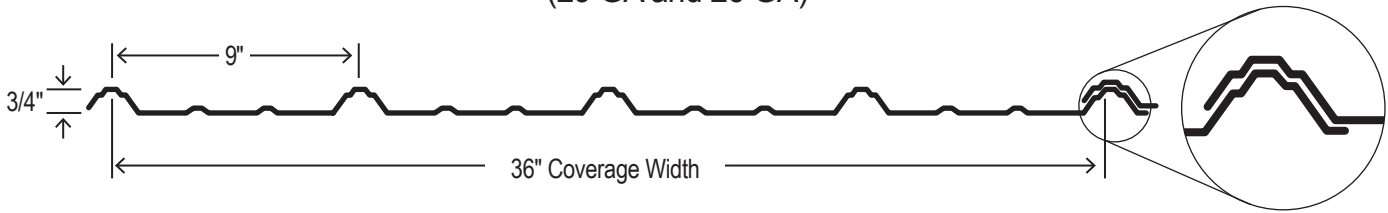
Galvalume (Galvalume)

* Only available in 29 GA

Colors shown here are as accurate as the printing process permits. Slight variations should be expected for the actual coil product.

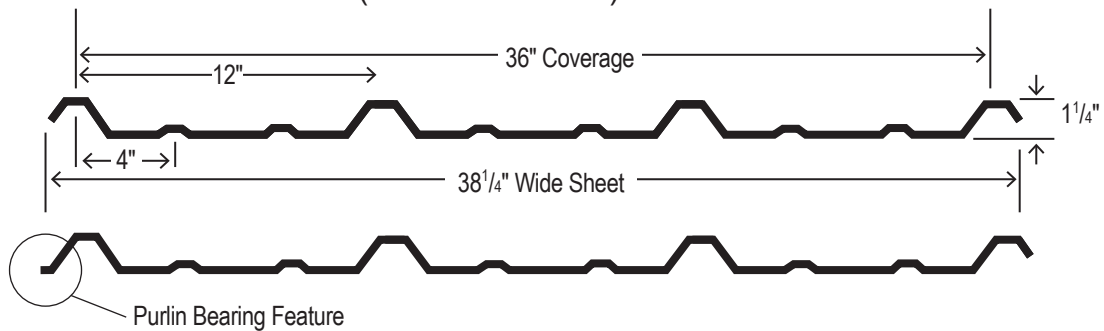
CMRS MULTI-RIB

CMRS MULTI-RIB Design Is Unmatched In Performance Durability.
(29 GA and 26 GA)



CMRS R-PANEL

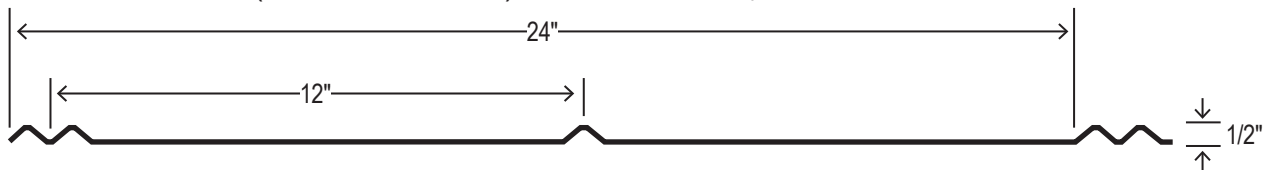
A Superior Roof or Wall Panel with Maximum Strength.
(26 GA and 24 GA)



CMRS 5-V

The 5-V's Stunning Design Makes it Very Popular with Residential and Commercial Customers.

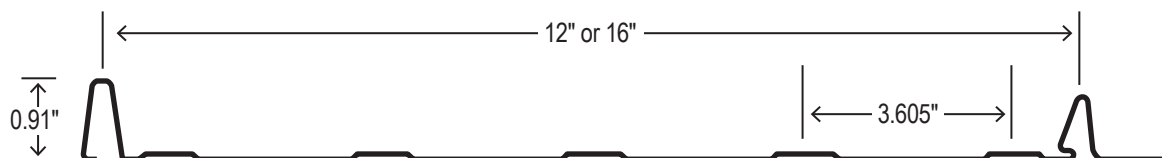
(26 GA and 24 GA) Call for color availability in 26 GA



CMRS NAIL STRIP

Revolutionary Design Eliminates the need for Through Fasteners.

(26 GA and 24 GA)



SAFETY PRECAUTIONS

Gloves should be worn to prevent injury while handling steel panels. Safety glasses should be worn to prevent eye injury when cutting or drilling steel panels with power tools. Use care when walking, sitting or kneeling on a steel roof to avoid a fall. Steel panels may become slippery when wet. Do not work on the steel panels when wet or when climatic

conditions are not suitable for safe installation. Failure to comply with these procedures relieves the manufacturer of responsibility for any resultant damage to or deterioration of the product and VOIDS ALL WARRANTIES. THERE IS NO IMPLIED WARRANTY OF MERCHANTABILITY OR FITNESS FOR PURPOSE.